

Boynton

COMMERCE CENTER

1800 - 2100 CORPORATE DRIVE
Pompano Beach, Florida



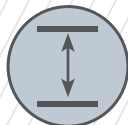
AVAILABLE FOR LEASE

Lease Rate: \$7.95 NNN/SF

BUILDING 2000: ±16,908 SF AVAILABLE



16,908 SF
Available



22 FEET
Clear Height



1,391 SF
Office Space



1985
Year Built



3 DOCK HIGH
Doors



ESFR
Sprinkler System

Boynton

COMMERCE CENTER

1800 - 2100 Corporate Drive
Boynton Beach, Florida



Boynton Commerce Center is an industrial/flex park consisting of 295,000 Square Feet of space. The property consists of 4 single story buildings with immediate access to I-95 via Woolbright Road in Boynton Beach, Florida within Palm Beach County.



BUILDING 1800
FULLY LEASED



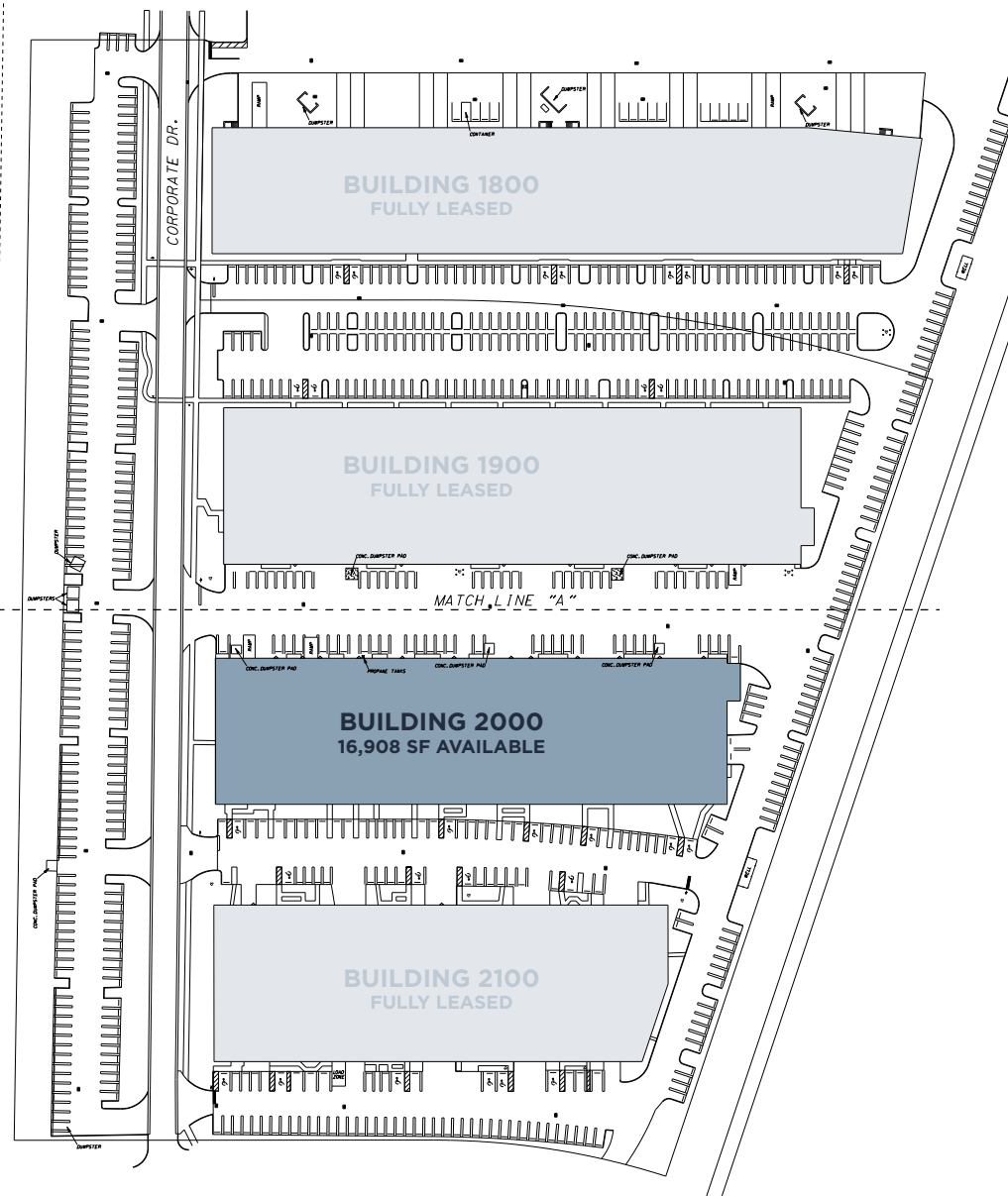
BUILDING 1900
FULLY LEASED



BUILDING 2000
16,908 SF AVAILABLE



BUILDING 2100
FULLY LEASED





BUILDING 2000 HIGHLIGHTS

RATE OPEX

AVAILABILITY	Full Space:	16,908 SF	\$7.95	\$3.96
	Divided:	11,272 SF	\$8.95	\$3.96
		5,636 SF	\$9.95	\$3.96

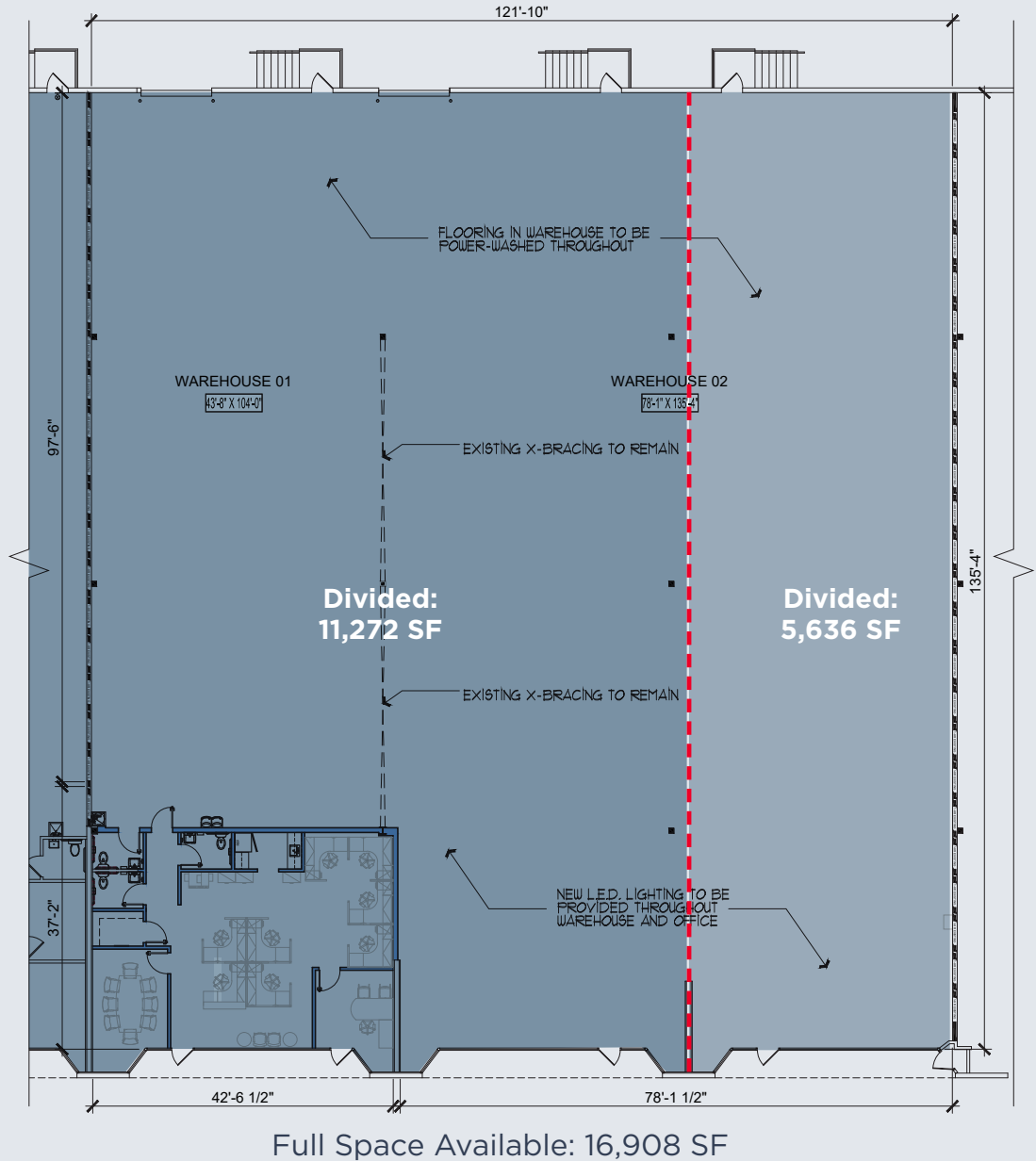
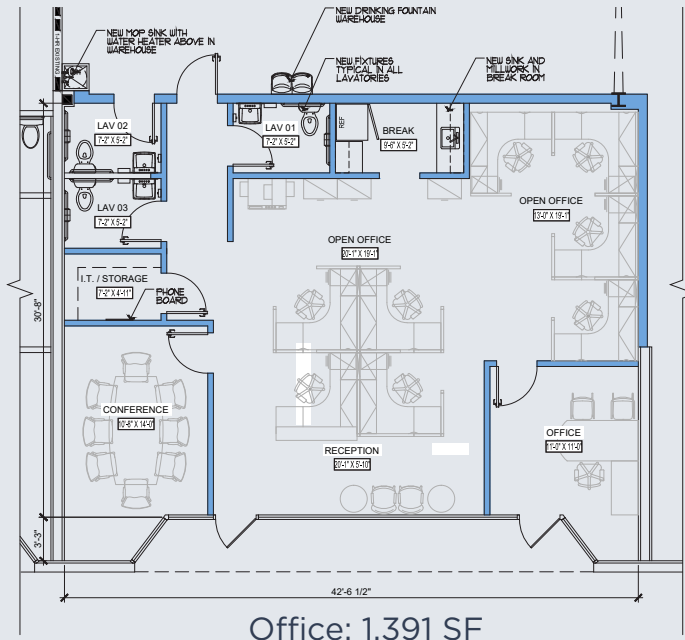
BUILDING SIZE 67,691 SF

PARKING 2.4:1,000/SF

DOCK HIGH DOORS 3

CLEAR HEIGHT 22'

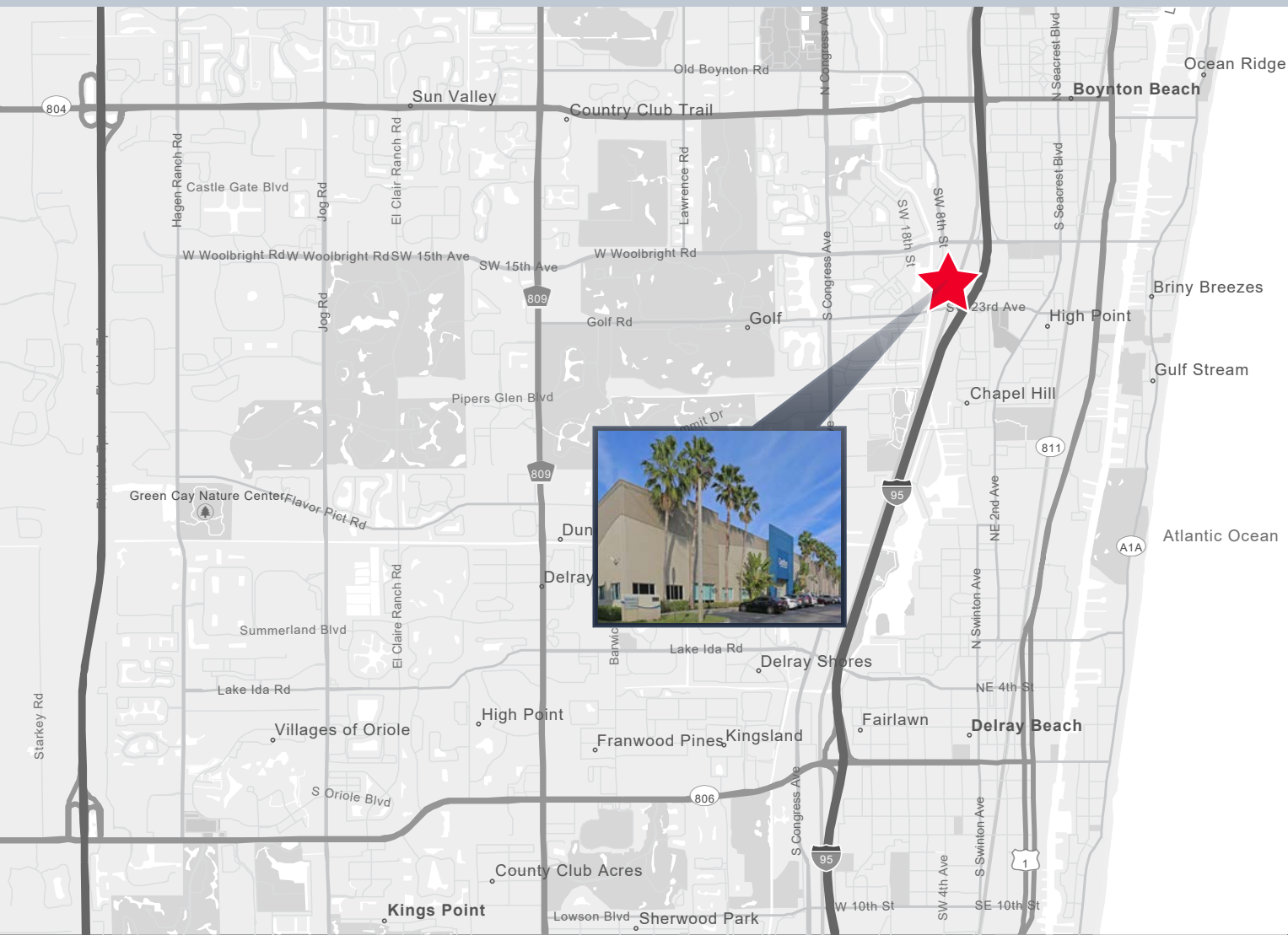
POWER 480v 3p 3w



Boynton

COMMERCE CENTER

1800 - 2100 Corporate Drive
Boynton Beach, Florida



CHRISTOPHER THOMSON, SIOR
Executive Director
+1 561 301 2390
christopher.thomson@cushwake.com

ALEX VANDRESSER
Associate
+1 561 227 2067
alex.vandresser@cushwake.com

225 NE Mizner Boulevard, Suite 300
Boca Raton, Florida 33432

+1 954 771 0800
cushmanwakefield.com